

Download and Launch Instructions for WLC Client App Program

Version 1.0

Contents

Introduction	1
Windows 7, IE9	2
Windows 7 or XP, IE8	3
Windows 7 or XP, Firefox.....	4
Windows 7, Google Chrome	6
Making the WLC Client App Available to Students.....	7
Quick Startup Guide for Using the WLC Client App Program	7
Troubleshooting.....	8

Introduction

The WLC Client App program is an application designed for Windows-based Personal Computers. It enables the delivery of Teknimedia Corporation’s online courses without the use of browsers or plugins. In most cases, it does not require any installation or administrative rights to the computer for it to launch. If you are an administrator, and would like your students to use the WLC Client App, please see section “Making the WLC Client App Available to Students” below. Please note that students still should log in to WLC (e-learning.com or one of our other dedicated servers assigned to your organization) to access their records or to change their personal settings. Similarly, administrators will need to login to WLC to manage their titles and students, or to view their activities.

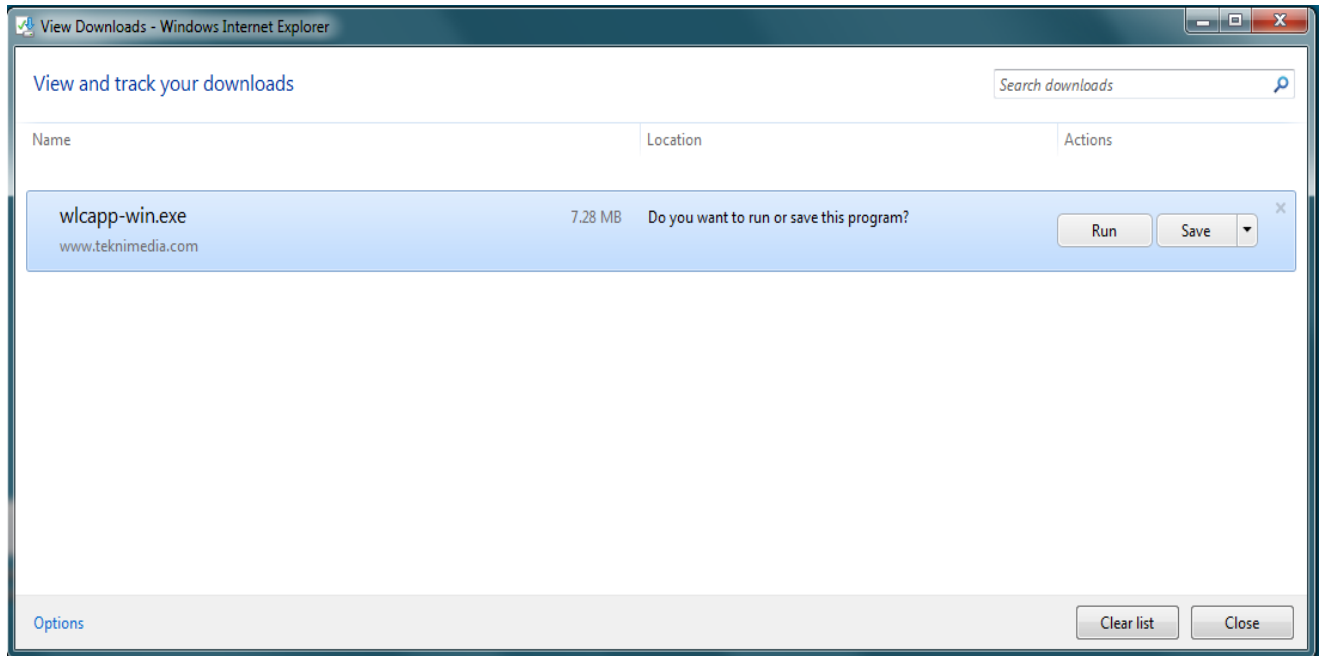
For specific instructions for the browser you use, please click on the appropriate heading in the Table of Contents at the beginning of this document.

Windows 7, IE9

To begin the download of the WLC Client App, click on the following link:

download.teknimedia.com/cld/wlcapp-win.exe

The following “View Downloads” dialog box appears:



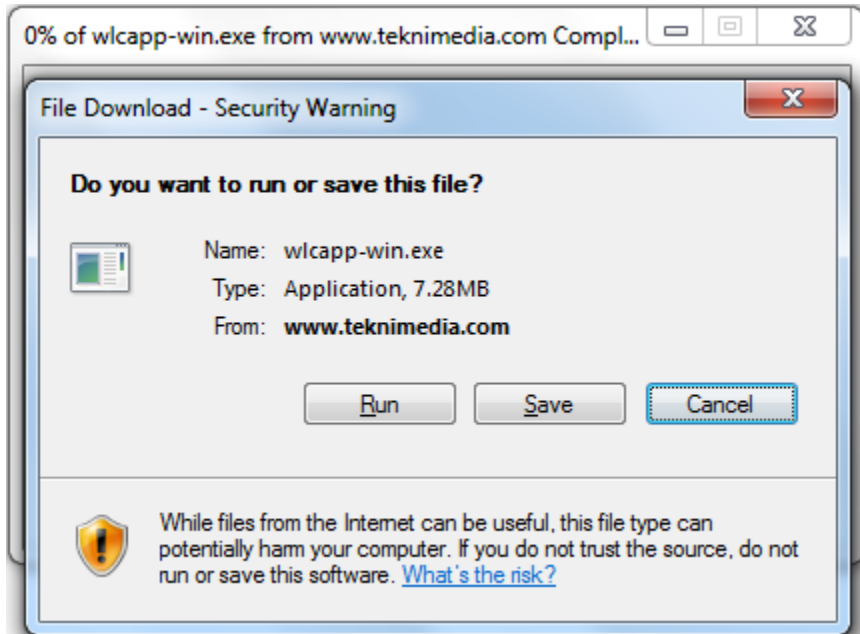
Click on Run. The WLC Client App program will launch.

Windows 7 or XP, IE8

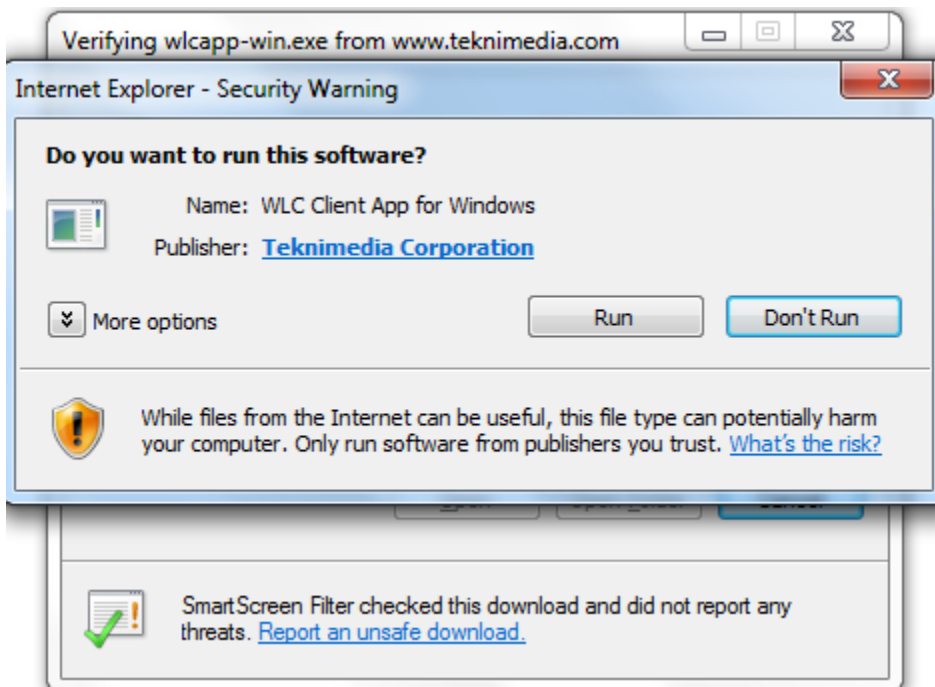
To begin the download of the WLC Client App, click on the following link:

download.teknimedia.com/cldl/wlcapp-win.exe

The following dialog box appears asking you whether you'd like to Run or Save the program.



Click on Run. The following Security dialog box appears:



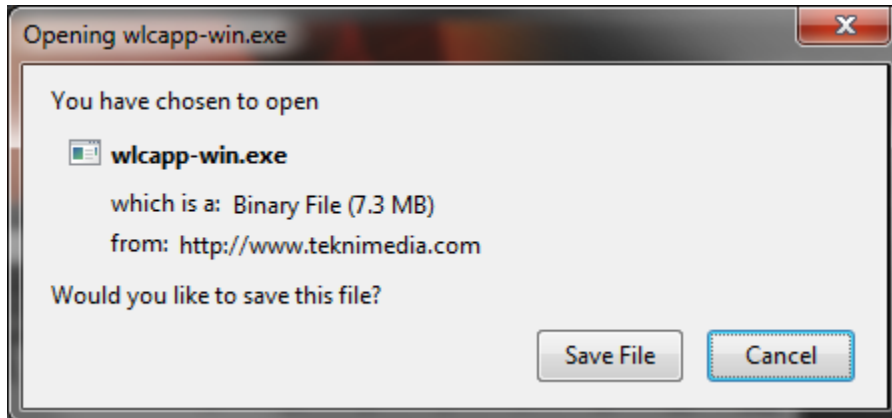
Once again click on "Run" and the WLC Client App program will launch.

Windows 7 or XP, Firefox

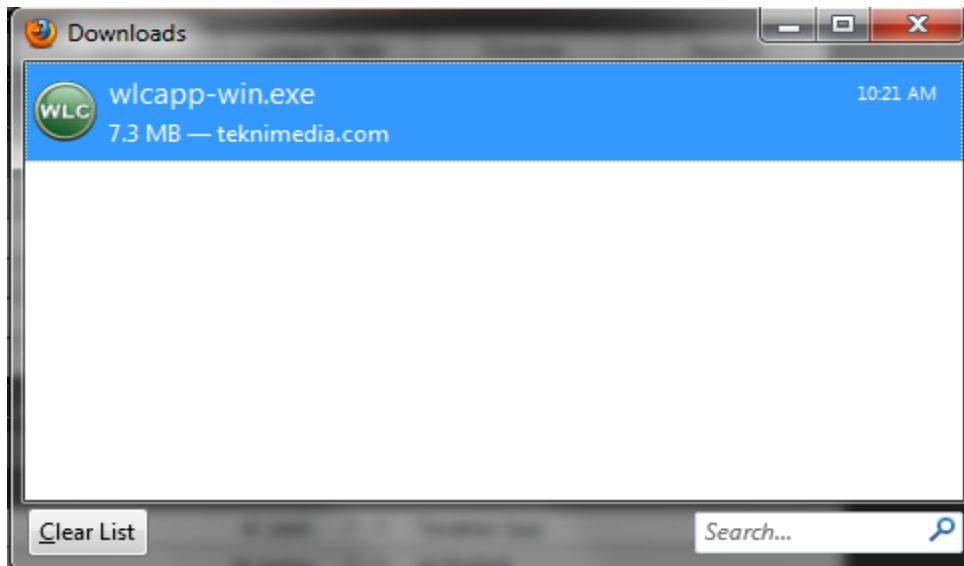
To begin the download of the WLC Client App, click on the following link:

download.teknimedia.com/cld/wlcapp-win.exe

The following security dialog box appears, asking you whether you'd like to Save the file.

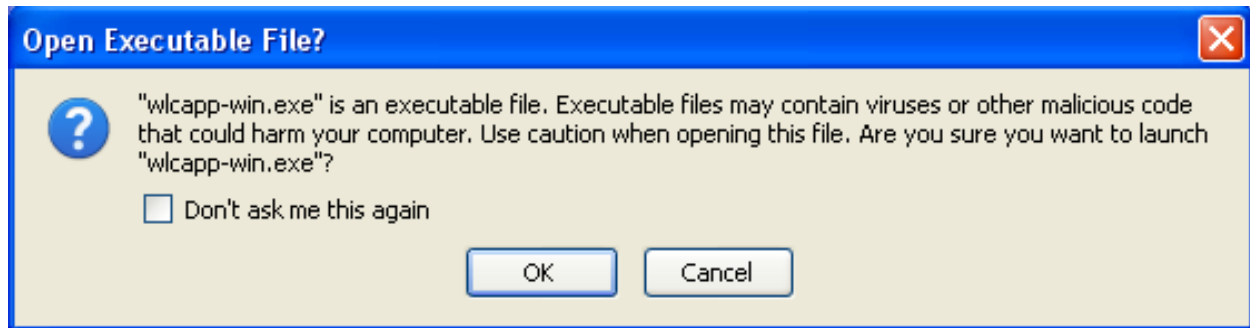


Click on Save. The WLC App program will be downloaded.

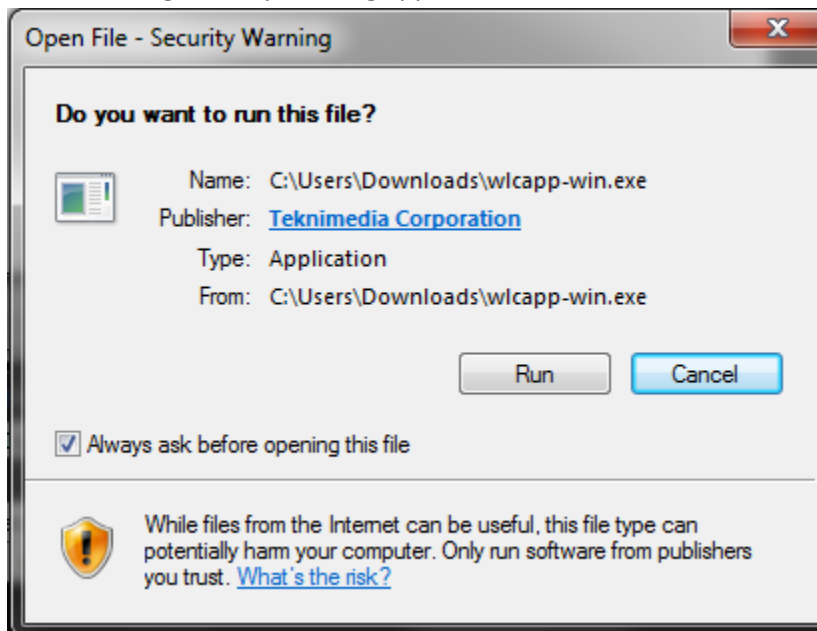


Once download is complete, double click on the wlcapp-win.exe entry in the list of downloaded programs.

If the following dialog box appears, click on OK



The following security warning appears:



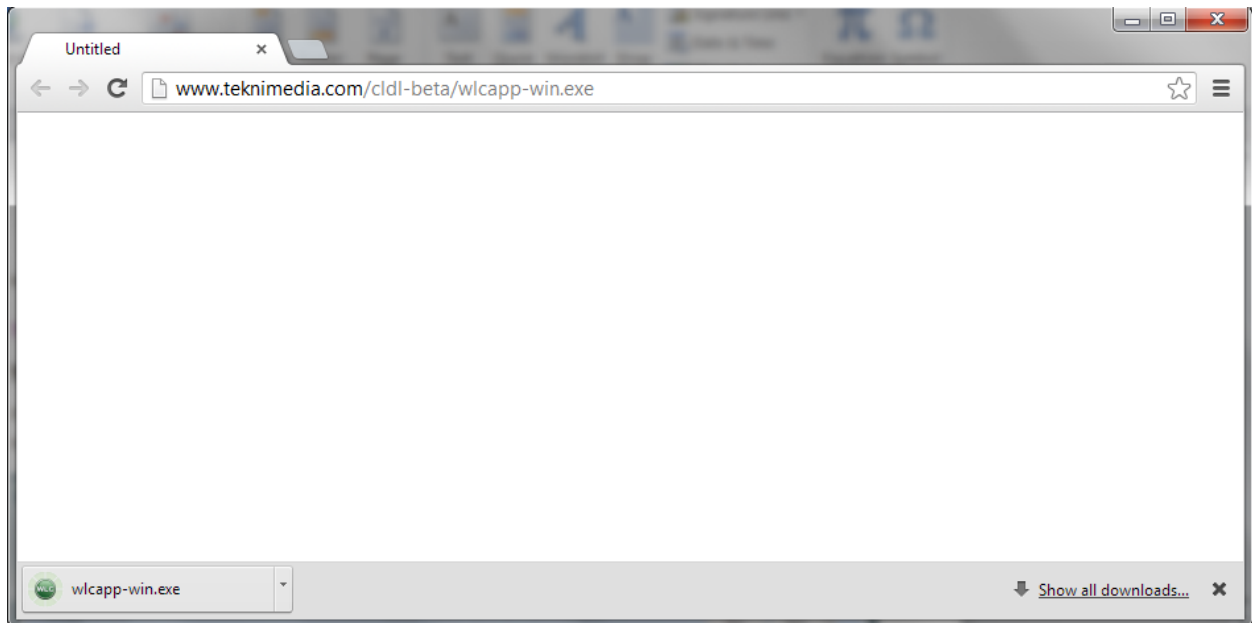
Click on Run. The WLC Client App program will launch.

Windows 7, Google Chrome

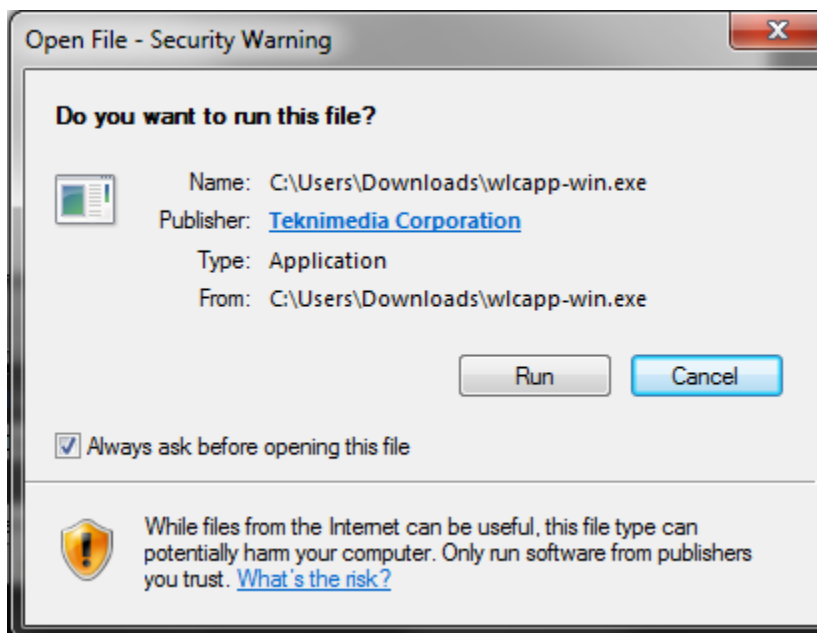
To begin the download of the WLC Client App, click on the following link:

download.teknimedia.com/cldl/wlcapp-win.exe

The WLC App program will be downloaded. Once the download is complete, an indication that the file is downloaded appears on the lower left of the browser screen.



Click on the WLC App icon (wlcapp-win.exe) on the lower right. The following security warning appears:



Click on Run. The WLC Client App program will launch.

Making the WLC Client App Available to Students

If you are an administrator, and would like to make the WLC Client App available to your students, you have 2 options:

- 1) Provide this document to your students and ask them to follow the above download and launch instructions.
- 2) Download the WLC Client App per the above instructions, but choose “Save” instead of “Run”, and save the App on the desktop. Students can then use the WLC desktop icon to launch the App.

Quick Startup Guide for Using the WLC Client App Program

Once the App launches, it communicates with our main server located at “e-learning.com” to initialize itself. It will then display its Login screen:



If you are given a URL for a dedicated server, please select it from the Server drop down list. Otherwise, use the default server, which is “e-learning.com”

Type in your User ID and Password and click on “OK” to login to the server. Once logged in, the application will display its Main Menu. Click on “TekAssess and Courses” to get the list of titles assigned to you. From there, choose the desired title and click on “OK” to launch your title.

Troubleshooting

If the App is unable to communicate with our main web server, it will inform you about the problem. Please make sure that you configure any Firewall you may have to allow all HTTP and HTTPS communication with the “e-learning.com” domain and all its subdomains. If your network is using a Proxy Server, you may program the WLC Client App to use your Proxy Server. The Proxy Server settings are accessible via the Settings page. If not automatically directed to that page, you may access it by clicking on the Settings button on the lower right of the screen.